

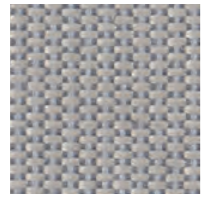
SELMER

Inspiration Outdoor

Patio

Stoffgruppe 6 Tissu groupe 6 Fabric category 6

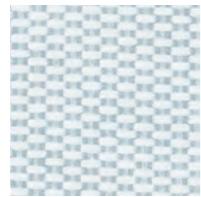
kvadrat



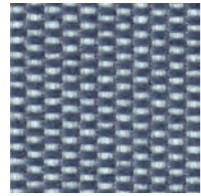
Patio
150



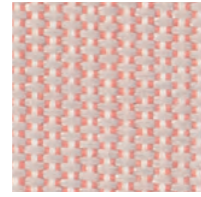
Patio
210



Patio
110



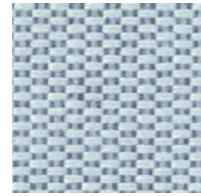
Patio
170



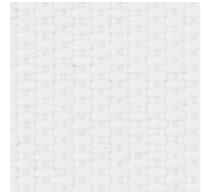
Patio
340



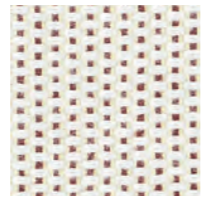
Patio
230



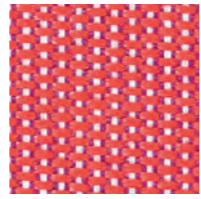
Patio
140



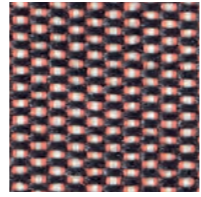
Patio
100



Patio
430



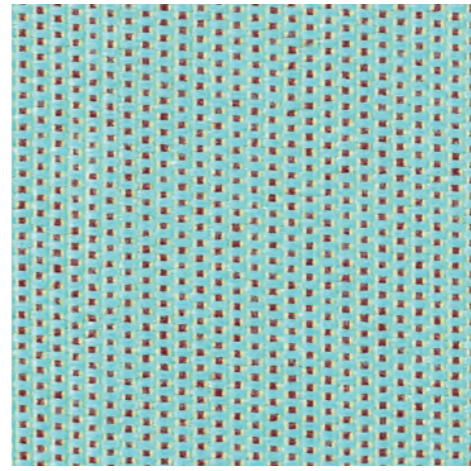
Patio
550



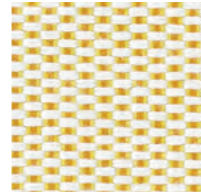
Patio
370



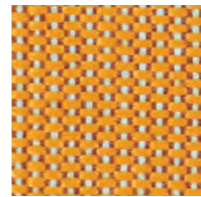
Patio
200



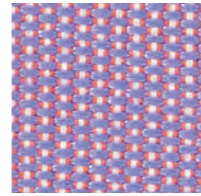
Patio
840



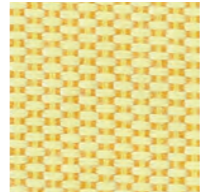
Patio
410



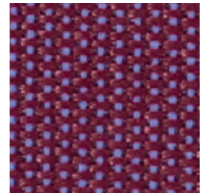
Patio
450



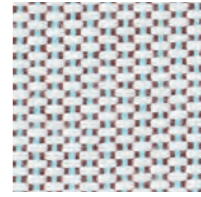
Patio
650



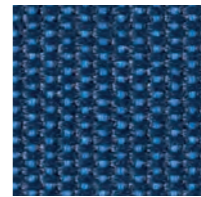
Patio
440



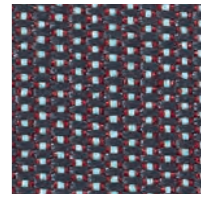
Patio
570



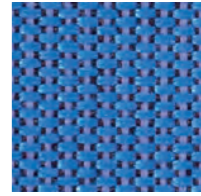
Patio
220



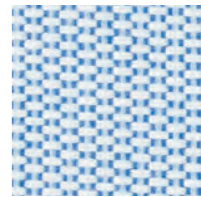
Patio
780



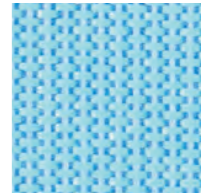
Patio
970



Patio
750



Patio
730



Patio
740

Zentrale

Selmer GmbH Objekteinrichtungen · Wenger Straße 3 · A-5203 Köstendorf
Tel.: 06216 20210 · Fax: 06216 20210-60 · info@selmer.at · www.selmer.at

Niederlassung Wien

In der Heumühle · Heumühlgasse 9/69 · A-1040 Wien
Tel.: 01 585 1525-20 · Fax: 01 585 1525-60 · heumuehle@selmer.at · www.heumuehle.at

Patio Designed by Karina Nielsen Rios



Anwendungsbereich Möbelstoff für öffentliche und private Bereiche. Resistent gegenüber Schimmel, Chlor-, Meerwasser und UV.

Beschreibung 100% Trevira CS. Fluorcarbon-frei wasserabweisend Ausrüstung. Breite ca. 140 cm. Gewicht ca. 560 g/lfm. Garbgefärbt. Farbunterschiede können vorkommen.

Webkant ↔

Testergebnisse Scheuerfestigkeit: Ca. 50.000 Scheuerhübe gemäss der Martindale Methode EN ISO 12947. Lichtechtheit (ISO) 7. Wetterechtheit (ISO) 6-7. Pilling (EN ISO) 3-4. Reibechtheit (ISO) trocken 4-5, nass 4-5. Spraytest (EN) 3. Resistent gegenüber Verschmutzung (BS) min. 4. Flammenschutz: BS 5852 ignition source 3. BS 5852 part 1 ignition source 0. DIN 4102 B1. EN 1021-1/2. IMO FTP Code 2010:Part 8. NF D 60 013. SN 198 898 5.2. UNI 9175 11M. US Cal. Bull. 117-2013. ÖNORM B1 / Q1. (Kopie von Prüfungsbericht verfügbar).

Pflege Sehen Sie bitte die ISO Pflegesymbole. Wascheinlauf ca. 1% bei 30°C.

Domaine d'utilisation Tissu d'ameublement pour aménagement privé et public. Résistant aux moisissures, au chlore, à l'eau de mer et UV.

Description 100% Trevira CS. Fini hydrofuge sans fluorocarbone. Largeur env. 140 cm. Poids env. 560 g/m lg. Teinture sur fil. Ecart de coloris possibles.

Lisieré de bordure ↔

Tests Résistance à l'abrasion: Env. 50.000 révolutions selon le procédé Martindale EN ISO 12947. Résistance à la lumière (ISO) 7. Résistance aux intempéries (ISO) 6-7. Boulochage (EN ISO) 3-4. Résistance au frottement (ISO) sec 4-5, mouillé 4-5. Test de pulvérisation (EN) 3. Résistance à la salissure visible (BS) min. 4. Normes au feu: BS 5852 ignition source 3. BS 5852 part 1 ignition source 0. DIN 4102 B1. EN 1021-1/2. IMO FTP Code 2010:Part 8. NF D 60 013. SN 198 898 5.2. UNI 9175 11M. US Cal. Bull. 117-2013. ÖNORM B1 / Q1. (La copie du compte rendu des tests est disponible sur demande).

Entretien Voir les symboles ISO. Rétrécissement: Env. 1% pour lavage à 30°C.

Application Out- and indoor upholstery for both domestic and public decoration. Mildew, chlorine, seawater and UV resistant.

Description 100% Trevira CS. Fluorocarbon-free water repellent finish. Width app. 55 inches (140 cm). Weight app. 560 g/lin.m. Yarn dyed. Colour differences may occur.

Selvedge ↔

Tests Abrasion: App. 50,000 rubs acc. to the Martindale method EN ISO 12947. Lightfastness (ISO) 7. Fastness to weathering (ISO) 6-7. Pilling (EN ISO) 3-4. Fastness to rubbing (ISO) dry 4-5, wet 4-5. Spray test (EN) 3. Resistant to visible soiling (BS) min. 4. Flame resistance: BS 5852 ignition source 3. BS 5852 part 1 ignition source 0. DIN 4102 B1. EN 1021-1/2. IMO FTP Code 2010:Part 8. NF D 60 013. SN 198 898 5.2. UNI 9175 11M. US Cal. Bull. 117-2013. ÖNORM B1 / Q1. (Copy of test report available).

Care Please see the ISO symbols. Shrinkage app. 1% when washed at 30°C.